

Art poured board

WWW.E-V-C.COM



Art poured board

The products are made of traditional cement, sand, stone, and environmental additives, combined with a new production process.

Let the designer's design effect accurately present, at the same time let the construction simple, clean environment, shorten the construction period.

Suitable for indoor and outdoor places.



NATURAL TEXTURE | CLASSIC COLOURS | CONVENIENT/EASY
INSTALLATION | HIGHLY DECORATIVE



Artificial board

Natural texture

Classic colors

Construction is convenient

Thin type of rammed earth



TRA1 gradients
size:570*2400mm



TYE3 Red
size:570*2400mm



TRC1 taupe
size:570*2400mm



TRD1 red
size:570*2400mm



TRE1 black ash
size:570*2400mm



TRA2 gradients
size:960*2800mm



TRB2 black ash
size:960*2800mm



TY11 Wine red
size:570*2400mm



TYA3 black
size:580*3100mm



TYB3 white
size:580*3100mm



TYC3 gray
size:580*3100mm



TYG1 black
size:570*2400mm



TYF1 white
size:570*2400mm



TYH1 gray
size:570*2400mm





Rammed earth AYB7
规格size: 1220*3000mm



Rammed earth AYA7
规格size: 1220*3000mm



Rammed earth old wall AYA6
规格size: 1230*3000mm



Rust ARA19
规格size: 1000*3000mm



Rammed earth board DYA12
size: 1220*3000mm



Rock slab DYA14
size: 1260*3020mm



Wood grain cement board DYA13
size: 1220*2960mm



Cement board DYA15
size: 1220*3100mm



Cement AYD10
size: 1220*3000mm



Cement AYA10
size: 1220*3000mm



Cement AYA12
size: 1170*2950mm



Cement AYA13
size: 1170*3000mm

Art poured board





White cement slab AYC12_...
size:1170*2950mm



Black cement slab AYD12
size:1170*2950mm



Adobe AYA21
size:1220*3000mm



White rammed earth AYN8
size:1220*3000mm



Black rammed earth AYM8
size:1220*3000mm



Grey rammed earth AYP8
size:1220*3000mm







Lunar surface concrete slab BYA4
size: 1220*3000mm



Rammed earth BYA2
size: 1220*3000mm



Thin rammed earth TYE3
size: 580*3100mm



Cement AYA24
size: 1280*3250mm



Cement AYB23
size: 1220*3000mm



Rammed earth plate CYA7
size: 1220*3000mm





Reverse cut cave stone BYA16
size: 1190*2880mm



Follow the cutting stone BYA15
size: 1190*2880mm



Weathered flowing stone BYB12
size: 590*2990mm



Weathered flowing stone BYA12
size: 590*2990mm



Washed stone AYA25
size: 1200*3000mm



Washed stone AYB25
size: 1200*3000mm







Moon stone CRA2
size: 1200*3260mm



Black stellalite CRB2
size: 1200*3260mm



The yellow stellate CRD2
size: 1200*3260mm



Gray stellate CRC2
size: 1200*3260mm





Washed stone AYE25
size: 1220*3000mm



Cement line BYA5
size: 600*3000mm



WWW.E-V-C.COM



Rammed earth AYA8
size:1220*3000mm



Rammed earth AYJ8
size:1220*3000mm



Rammed earth AYC8
size:1220*3000mm



Rammed earth AYB8
size:1220*3000mm



BYA18 rammed earth plate
size:1220*3000mm



Rammed earth BYJ10
size:1240*3000mm



BYE10 rammed earth plate
size:1240*3000mm



Rammed earth BYA3
size:1220*3000mm



Yunfengshi CYA13
size:570*2330mm



Yunfengshi CYB13
size:570*2330mm



Yunfengshi CYC13
size:570*2330mm



Yunfengshi CYD13
size:570*2330mm



CYA8 crack
size:1250*3100mm



CYB8 crack
size:1250*3100mm



CYC8 crack
size:1250*3100mm



CYB9 SLATE brown
size:1250*3100mm



CYA9 SLATE brown
size:1250*3100mm



CYC9 SLATE brown
size:1250*3100mm



CYD9 SLATE brown
size:1250*3100mm



CYE9 SLATE brown
size:1250*3100mm



Sand rock CRA1
size:1200*3300mm



AYC25 weathered washed stone
size:1220*3000mm



AYD25 weathered washed stone
size:1220*3000mm



The black rocks AYA22
size:1220*3200mm



White rock AYD22
size:1220*3200mm



Grey rocks AYB22
size:1220*3200mm







CYA4 black sawn wood
size: 1240*3230mm



CYE4 wood grain saw wood
size: 1240*3230mm



CYC4 wood grain saw wood
size: 1240*3230mm



CYB4 white sawn wood
size: 1240*3230mm



CYC4 grey sawn wood
size: 1240*3230mm



WWW.E-V-C.COM



「薄款夯土」 Thin type of rammed earth



TYA1- Gradients
size:570*2400mm



TYB1- Gradients
size:570*2400mm



TYC1 is yellow
size:570*2400mm

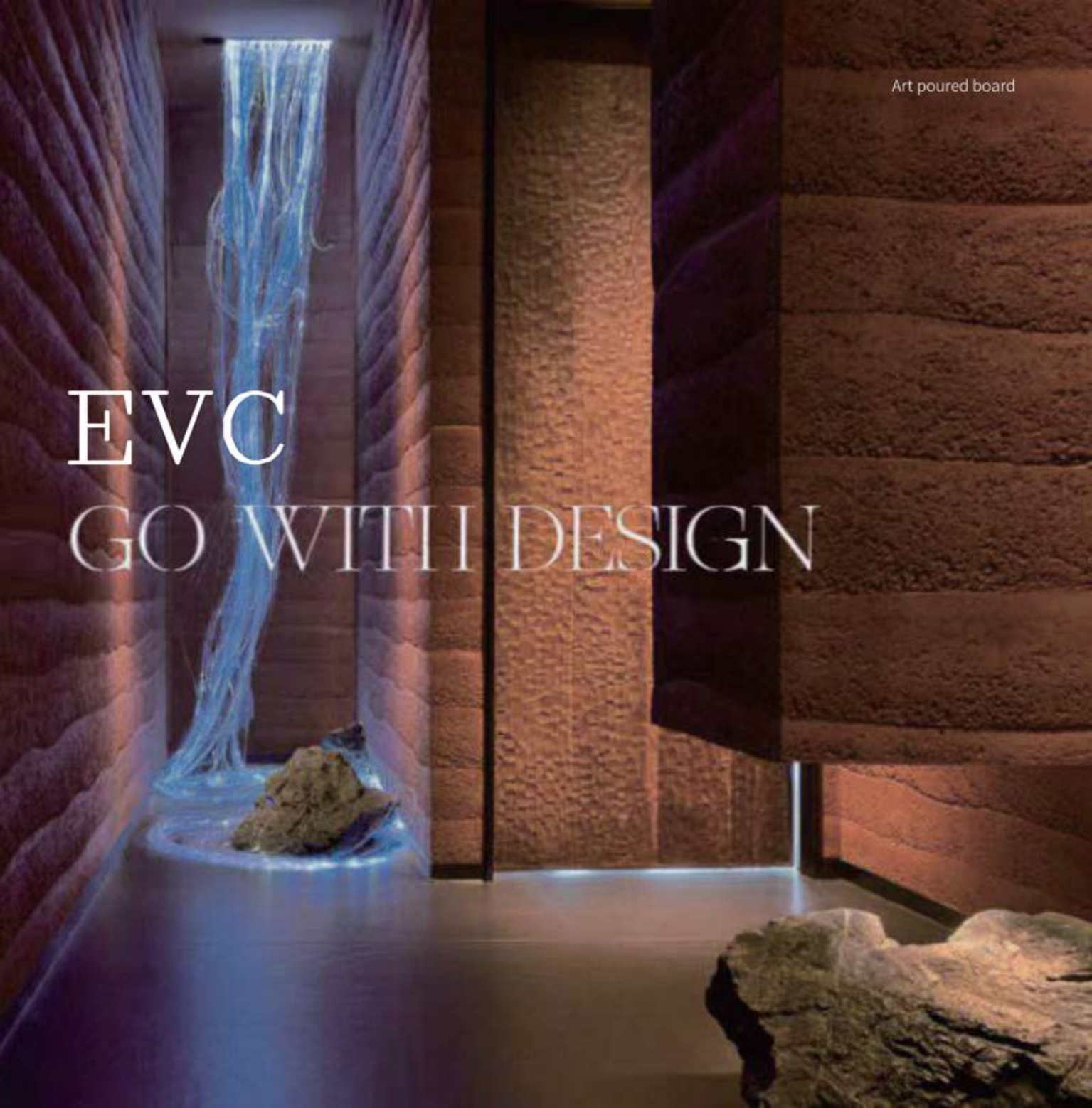


TYD1 red
size:570*2400mm



Art poured board

EVC GO WITH DESIGN





Cave Stone Mosaic. -DYA1
size: 1180*2980mm



Cave Stone Mosaic. -DYA2
size: 580*2990mm



Cave Stone Mosaic. -DYA3
size: 580*2990mm



Cave stone Mosaic. -DYB1
size: 1180*2980mm



Cave stone Mosaic. -DYB2
size: 580*2990mm



Cave Stone Mosaic. -DYB3
size: 580*2990mm



Art poured board



Cave Stone Mosaic. -DYB3
size:580*2980mm



Cave Stone Mosaic. -DYA5
size:580*2980mm



Cave Stone Mosaic. -DYA6
size:580*2960mm



Cave stone Mosaic. -DYB4
size:580*2980mm



Cave stone Mosaic. -DYB5
size:580*2980mm



Cave stone Mosaic. -DYB6
size:580*2960mm



Cave Stone Mosaic CYA14
size:590*2980mm



Cave Stone Mosaic CYC14
size:590*2980mm



Cave Stone Mosaic CYA15
size:590*2980mm



Cave Stone Mosaic CYC15
size:590*2980mm



Cave Stone Mosaic CYB14
size:580*2980mm



Cave Stone Mosaic CYD14
size:580*2980mm



Cave Stone Mosaic CYB15
size:580*2980mm



Cave Stone Mosaic CYD15
size:580*2980mm



Gilded plate



Gilded Plate - CYF22
size: 1220*2440mm



Gilded Plate - DYA7
size: 1220*2440mm



Gilded Plate - DYB7
size: 1220*2440mm



Gilded Plate - DYD7
size: 1220*2440mm



Gilded Plate - DYE7
size: 1220*2440mm



Gilded Plate - DYF7
size: 1220*2440mm



Gilded Plate - DYG7
size: 1220*2440mm



Gilded Plate - DYH7
size: 1220*2440mm



Gilded Plate - DYJ7
size: 1220*2440mm





Gilded Plate-DYK7
size: 1220*2440mm



Gilded Plate-DYL7
size: 1220*2440mm



Gilded Plate-DYM7
size: 1220*2440mm



Gilded Plate-DYN7
size: 1220*2440mm



Gilded Plate-DYO7
size: 1220*2440mm



Gilded Plate-DYP7
size: 1220*2440mm



Gilded Plate-DYQ7
size: 1220*2440mm



Gilded Plate-DYR7
size: 1220*2440mm



Gilded Plate-DYS7
size: 1220*2440mm

Art poured board



Gilded Plate-DYK7
size: 1220*2440mm



Gilded Plate-DYL7
size: 1220*2440mm



Gilded Plate-DYD17
size: 1220*2440mm



Gilded Plate-DYE17
size: 1220*2440mm





Cloth thread stone white TYB18
size:600*3000mm



Cloth thread stone black TYA18
size:600*3000mm



Cloth thread stone gray TYC18
size:600*3000mm



Linen knitted white TYA9
size:910*3000mm



Linen knitted red TYB9
size:910*3000mm





EVOLUTION OF TEA

SINCE
1912

WWW.E-V-C.COM



Chorioidea white TYB20
size:610*3200mm



Choroid stone Black TYA20
size:610*3200mm



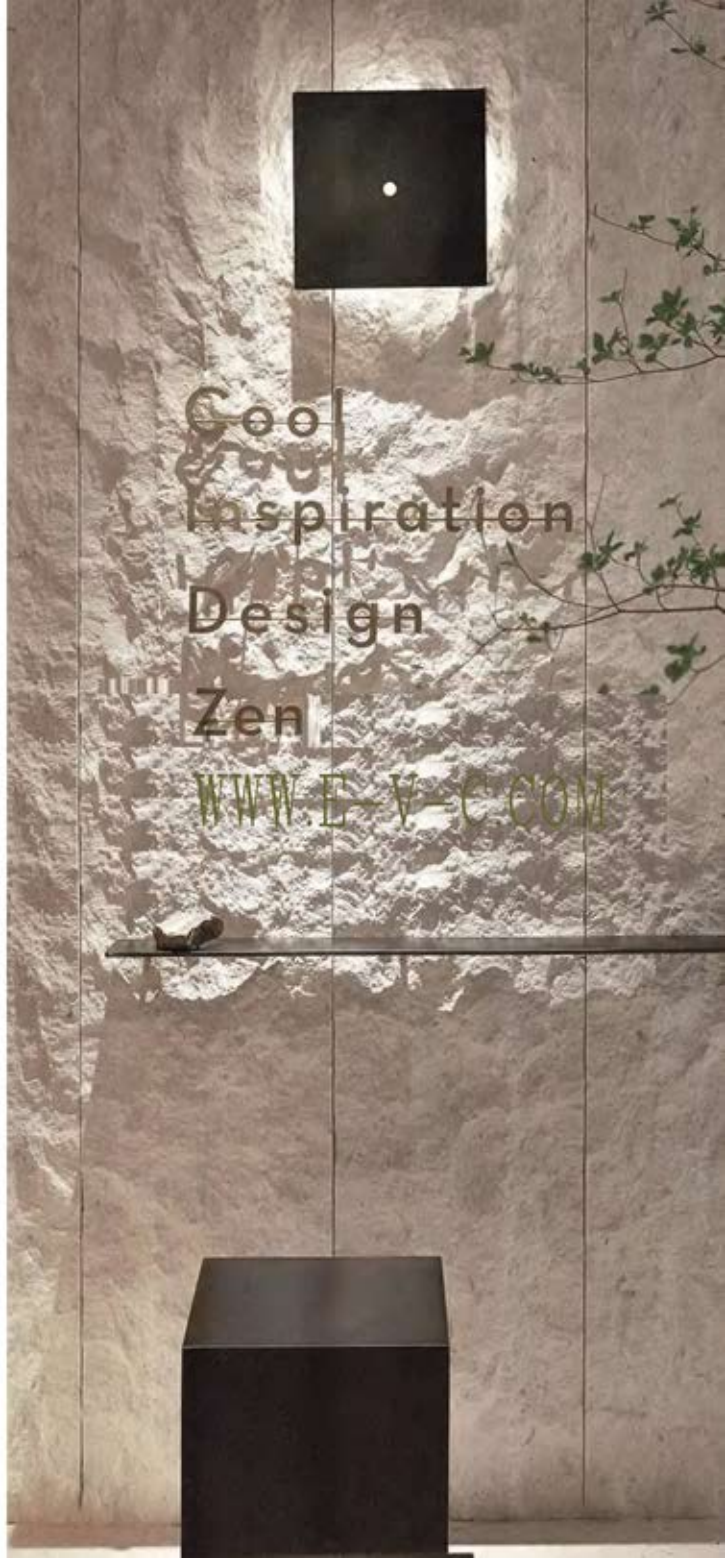
Chorioidea Yellow TYD20
size:610*3200mm



Chorioidea gray TYC20
size:610*3200mm



Chorioidea Off white TYE20
size:610*3200mm





WWW.E-V-C.COM



Crisscross stone white TYB19
size:610*3000mm



Crisscross stone black TYA19
size:610*3000mm



Crisscross stone yellow TYD19
size:610*3000mm



Crisscross stone grey TYC19
size:610*3000mm



Crisscum stone beige TYE19
size:610*3000mm



Carbon wood TYA12
size:1220*3180mm

Carbon wood TYA13
size:1260*3200mm

Ultra-thin stone TRA17
size:600*1200mm





Drifting Sand Brick-DYA16
size:80*260mm



Drifting Sand Brick-DYB16
size:80*260mm



Water washed quicksand brick DYA18
size:80*260mm



Water washed quicksand brick DYB17
size:80*260mm



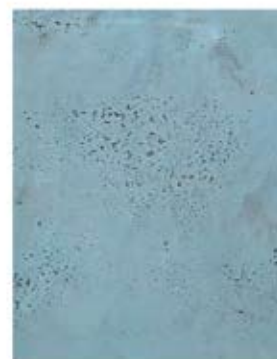
Sandboard TYA26
size:1210*2420mm



Sand board TYB26
size:1210*2420mm



Sand board TYC26
size:1210*2420mm



Sand board TYD26
size:1210*2420mm



Sandboard TYE26
size:1210*2420mm



Sand board TYF26
size:1210*2420mm

NEW ARRIVALS



White rock LYD22
size: 1220*3200mm



Rammed earth LYB7
size: 1220*3000mm



Sand rock LYA10
size: 1200*3300mm



Rammed earth LYA7
size: 1220*3000mm



Rammed earth LYC8
size: 1220*3000mm



Sand rock LYB10
size: 1200*3300mm



Rammed earth LYA8
size: 1220*3000mm



Rammed earth LYE8
size: 1220*3000mm



Cement board LYA11
size: 530*2390mm



Special price rammed earth - black gray LYB2
size:960*2800mm



Special price rammed earth - black LYG1
size:570*2400mm



Special price rammed earth - red LYD1
size:570*2400mm



Special price rammed earth - gray LYH1
size:570*2400mm



Special price rammed earth - gradient LYA1
size:570*2400mm



Special price rammed earth - gradient LYA2
size:960*2800mm




Brick LRA21
size:1220*3000mm



Starry Moon Stone LCYA2
size:1200*3260mm



Star Moon Stone LCYB2
size:1200*3260mm



WWW.E-V-C.COM

Combustion performance test - soft art casting plate





中国认可
MEMBER
OF
INTERNATIONAL
TESTING
CNAS L1049

检 验 报 告

报告编号: 2023/C03027

样品名称: 瓷质板

委托单位: 河北唯森新材料科技有限公司

检验类别: 委托检验



国家化学建筑材料测试中心(材料测试部)
中国石油化工股份有限公司北京化工研究院





中国认可
MEMBER
OF
INTERNATIONAL
TESTING
CNAS L1049

国家化学建筑材料测试中心 (材料测试部) 检 验 报 告

报告编号: 2023/C03027 共 2 页 第 1 页

委托单位	河北唯森新材料科技有限公司	检验类别	委托检验
生产单位	河北唯森新材料科技有限公司	生产日期	/
样品名称	瓷质板	检测项目	C*P*H*2
样品规格	100mm×100mm×2mm	样品外观	颜色
取样日期	/	报告日期	C:20231006
取样数量	1	产品编号/产品编号	/
材料标准	/	报告日期	2023.10.06
材料名称	/	材料规格	/
检验结论	<p>其他产品按照委托单位要求自行检测项目及国家现行标准进行检测, 依据 GB 8624-2012《建筑材料及制品燃烧性能分级》中 A1.1 等级要求判定其等级, 该材料燃烧性能符合难燃材料 (B1级) 要求。</p>		
备注	<p style="text-align: right;">报告日期: 2023年10月06日</p>		

复核: 张青

审核: 下昂





中国认可
MEMBER
OF
INTERNATIONAL
TESTING
CNAS L1049

国家化学建筑材料测试中心 (材料测试部) 检 验 报 告

报告编号: 2023/C03027 共 2 页 第 2 页

序号	检测项目	技术要求 GB 8624-2012	检测结果	判定结论	检测方法
1	烟密度增长系数 (DRA _{600, 300})	<120	68	符合	GB/T 2028-2009
2	300s内总烟气产量 (Y ₃₀₀)	<7.5	4.6	符合	GB/T 2028-2009
3	大腔体烟量增长率 (LFR)	大腔体内层烟 体腔内式样无 层烟体	大腔体内层 体腔内式样无 层烟体	符合	GB/T 2028-2009
4	烟气生成速率指数 (SMOGR ₆₀₀)	<100	12	符合	GB/T 2028-2009
5	300s内总烟气产生量 (Y ₃₀₀)	<200	49	符合	GB/T 2028-2009
6	300s内腔体烟量增长率	300s内无腔体 腔体烟量增长	300s内无腔体 腔体烟量增长	符合	GB/T 2028-2009
7	可燃性液体 (L ₁) 可燃性固体 (S ₁)	≤0.10 ≤0.10	≤0.10 ≤0.10	符合	GB/T 8624-2012

注: 1. 本试验结果只与制品的试样在稳定试验条件下取得的数据, 不得作为判定产品符合性依据。
2. 以上第1-6项检测结果以试验地点为中心值, 第7项试验结果以平均值判定。
3. 其他样品数量为10mm厚板材料。

主检: 张青 李永彪

SAMPLE PROJECTS

WWW.E-V-C.COM

Art poured board





Art poured board



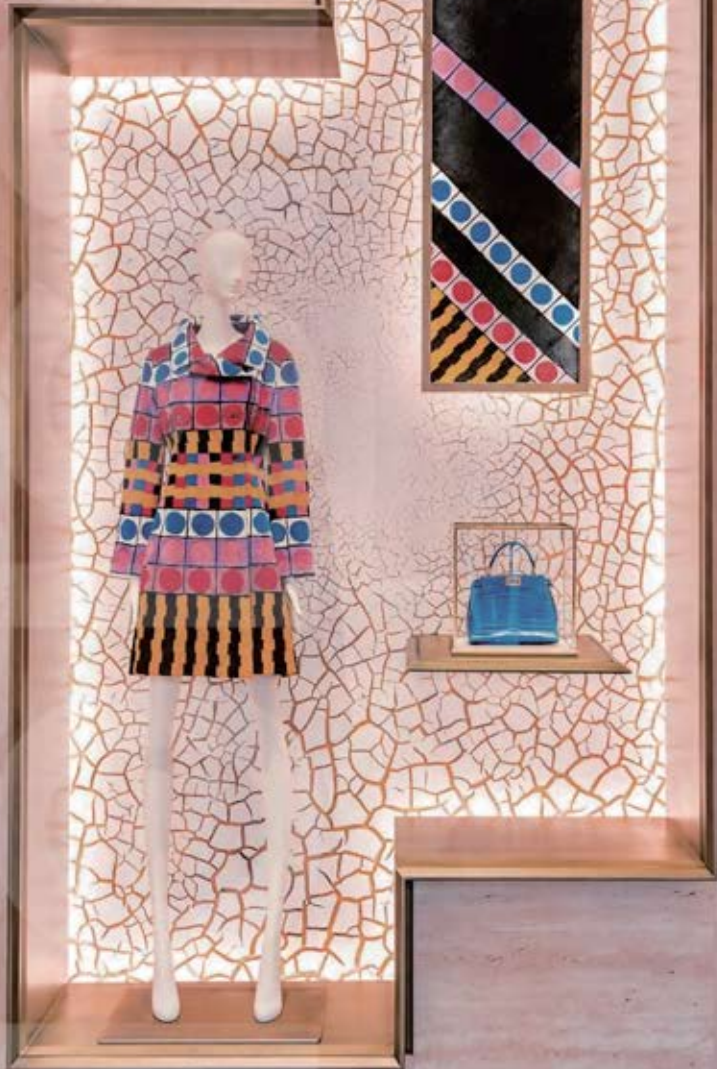


WWW.E-V-C.COM



pooured board

WWW.E-V-C.COM



Art poured board

WWW.E-V-C.COM



INSTALLATION INSTRUCTIONS



Step 1 : first with a steel cutting machine to repair the edge, and then cut into the need to install on the wall size

Step 2 : positive Angle treatment: the two plates will be connected to the inside of the ground into a 45 degree Angle, after stitching to make it more closed and more beautiful.

Step 3 : Glue the art wallboard onto the wall. (Note: Hard wallboard can be glued with structural glue, soft wallboard must be glued with glue and filled to the whole board. If installed on the wood board, 20% white latex should be added to the putty. Cement and repair materials should be ready to use when used, placed to the next day, all solidified, can not be used)

Step 4 : affix art wallboard, press tight, let it and metope close. Pay attention to the use of the thickness of putty to adjust the surface of the flat.



WWW.E-V-C.COM

step 5 : with small wooden or small square art wall board and metope nail tight, press on firm. let the mud dry and then take out these wooden blocks. you can also use red tile clamp to control the flatness of the board and board interface.

step 6: the two sides of the gap with the united states grain glue affixed to prevent the repair material pollution wallboard.

step 7: fill the sewing material in the gap that has been proportioned in the white bucket (note: it can be used directly after opening, and remember to close the lid after use. the sewing material exposed to the air for a long time will dry out, and it can not be used after one day. it can be put into a clean syringe for sewing.

step 8 : this step is the most important, please read carefully!! fill the gap with the same color auxiliary materials, soft to the application of soft sewing material, hard to the application of hard sewing material. note: the filling should clean up the excess overflow material and scrub the seam area with a clean wet towel. (the hard wall panel is scrubbed again with a wet towel when the sewing material is semi-dry, and the soft wall panel only needs to be scrubbed again) so that the color will be unified, and the repair material will not be cleaned up once it is cured.



EVC
company

<http://www.e-v-c.com/>

Product architecture

custom wall panel	Ultra-thin stone	B series metal profile
Wooden plate	Volcanic Rocks	Aluminum foam
Commercial space veneer fire panels	Metal plated stone brick	Z series aluminum foam
Ultra clear mirror plate	Xuangu volcanic rock	Living moss
Plaster texture plate	Z series PU decorative panel	Creative modular custom products
Starry sky top acoustic board	H series PU large board	Mosaic of resin
Y series acrylic sheet	B series PU decorative panel	Y series creative module
Transparent art cement	PU decorative panel	Commercial special board
N-series cement casting plate	Fusion Cement member	H Series Outdoor flooring
C series soft stone	D series modeling brick	N series handmade brick
Art poured board	M series component bricks	Super black brick
Cement decorative board	K series foamed ceramics	Dupont paper
S series soft stone	K series crystal brick	Weaving of bamboo and rattan
3D cement brick	Hollow glass brick	The deep mirror
FRP cement casting plate	X series jade glass	Cement component lighting system
Microcement siding	T series crystal brick	PU component lighting system
Perlite board	J series water corrugated plate	D series foamed ceramics
Church art glass	Aluminum embossed plate	B series metal lines
X series hand sanded brick	FRP emerald grille	French textured paper
led photoglass (hard)	Outlet tile	

